

FULL PAPER

Spatial analysis of dengue fever by region and topography in kediri regency, east java

Demes Nurmayanti*  | Ngadino Ngadino  | Marlik Marlik  | Slamet Wardoyo 

Department of Environmental Health, Poltekkes
Kemenkes Surabaya, Surabaya, Indonesia

Kediri District is an endemic area, with dengue fever cases occurring every year. Kediri District has different topography, namely lowlands and highlands. The air temperature in the region ranges from 23 °C to 31 °C, but dengue fever cases occur evenly in the Kediri District area. Several factors influence the high number of Dengue Fever Cases, one of which is the presence of *Aedes aegypti* larvae in an area. The purpose of this study was to describe dengue fever cases, dengue fever risk areas and topography in Kediri District, East Java, Indonesia. This study was observational with cross sectional design. The object of the study was community health clinics in Kediri district, 37 areas. The variables studied were data on dengue fever cases, topography, and dengue risk areas. Data collection was done using interview and observation techniques. Data were displayed in the form of graphs and maps using Arcgis application. Results showed Kediri Regency 97% risk of dengue fever with percentage free of larvae of an area < 95%. From 37 public health services, Dengue fever cases are still the highest and all over the area scattered, the highest case in Public health service Pare observed from the topography of the Kediri Regency, 73% lowland.

*Corresponding Author:

Demes Nurmayanti

Email: demes@poltekkesdepkes-sby.ac.id

Tel.: +8113627796

KEYWORDS

Dengue hemorrhagic fever; topografi; keberadaan larva; daerah risiko demam berdarah.

Introduction

Indonesia is a tropical Asian country, has two seasons, namely the dry and rainy seasons, in one year having two seasons affects the density of *Aedes aegypti* mosquitoes. The population of *Aedes aegypti* mosquitoes will increase in the rainy season. Stagnant water caused by rainwater makes the development of *Aedes aegypti* mosquitoes increase higher than in the dry season. The correlation of increased development of *Aedes aegypti* mosquitoes is very high, this is associated

with the incidence of dengue fever cases which are always high in the rainy season [1]. The development of the *Aedes aegypti* mosquito is not influenced by the topography of an area. Many cases of dengue fever occur in Indonesia which has different topography, namely lowlands, highlands such as hills and mountains. One of the regions in Indonesia with different topography is Kediri District. The topography in the region has an air temperature ranging from 23 °C-31 °C. The height of an area will affect the air temperature in the area. The air temperature

decreases every hundred meters altitude, the air temperature will drop $\pm 0.27^{\circ}\text{C}$ [2].

Air temperature in each region affects the bionomics of *Aedes aegypti* larvae. The preferred temperature for breeding is $\pm 29^{\circ}\text{C}$ [3]. The presence of these larvae is a vector of dengue fever. High cases of dengue fever in an area, it is certain that the presence of larvae in the area is also present [4,5]. Dengue fever cases in Kediri District in 2021 increased again from the previous year. This study aims to describe dengue hemorrhagic fever cases by considering areas that have a risk of dengue fever seen from Topography in Kediri District, East Java, Indonesia.

Methods

This study was observational research in the field with a cross sectional design. The study was conducted in the Kediri District area as many as 37 public health services in 2022. The variables studied were data on dengue fever cases, regional topography and dengue risk areas obtained by making direct observations in the field at the homes of dengue fever sufferers. Data collection was done using interview and observation techniques in the community. Data is displayed in the form of graphs and maps using Arcgis application.

Penentuan areas at risk cases of DHF

Conducting a dengue vector survey to determine dengue risk areas in an area is by calculating the larval index based on the ratio of the number of houses declared larvae-free compared to the number of houses examined. The indicator in determining a larval-free area is if the larval index calculation result is $\geq 95\%$. Areas with a larval index $\geq 95\%$ are categorized as areas not at risk of dengue fever transmission.

Spaasial analysis

Data were analyzed in spatial form and displayed in a geographic information system (GIS) in the form of maps using ArcGIS software.

Ethical Approval

This research has been approved by the Surabaya Health Polytechnic Health Research Ethics Committee with registration no. EA/1137/KEPK-Poltekkes_Sby/V/2022.

Results

Dengue fever cases in Kediri district in 2022 were spread throughout the working area of the Public Health center. The highest cases were in the Pare community health clinic area with 61 cases of DHF and the lowest in the Pelas community health clinic area with 3 cases (Figure 1).

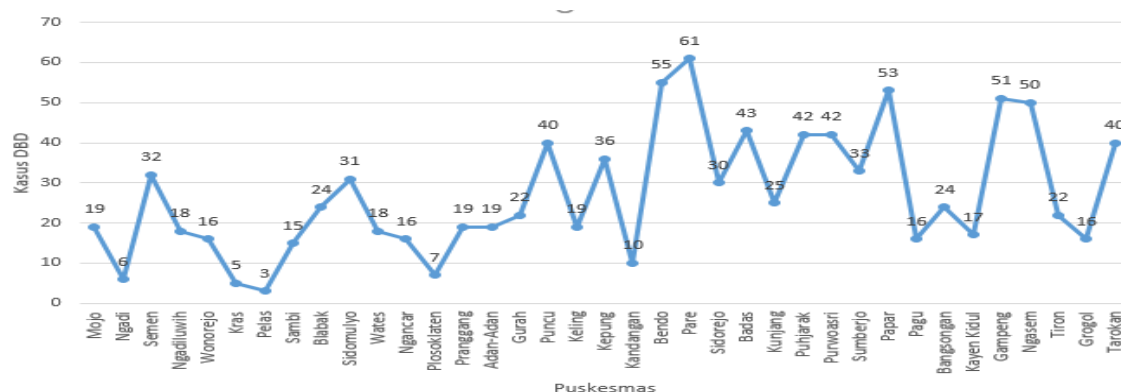


FIGURE 1 Distribution of Dengue fever cases in Kediri District in 2022

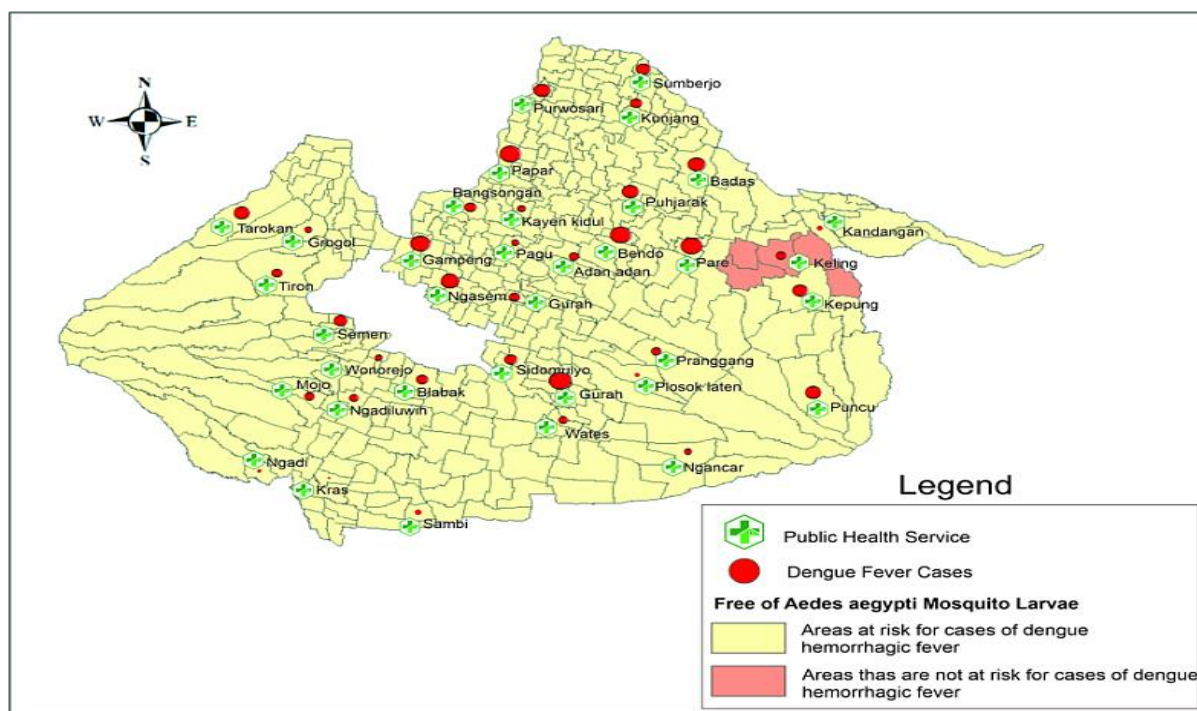


FIGURE 2 Distribution of Dengue hemorrhagic fever cases and areas at risk cases of DHF in Kediri Regency in 2022

Based on the spatial analysis of the area, the mapping of the number of dengue hemorrhagic fever cases with the potential for transmission seen from the dengue vector density indicator, namely the larval index, can be seen in Figure 2. The results of the calculation of the larval index used to determine areas that have the potential for dengue transmission, there are 97% of areas where dengue vector density is found and 3% of areas not at risk of dengue transmission, namely the area in the Keling community health clinic. Keling public health service is an area not at risk of dengue fever transmission, seen from the dengue hemorrhagic fever cases in that area are still high at 19 cases. Almost all areas in Kediri District have the potential for dengue fever transmission. Dengue Fever cases are highest in the Pare public health service with 61 cases, but the Flick Free Rate of 75% is still above the Purwoasri public health service. The topography of the area in Kediri District is

divided into three: lowland 0-400 m above sea level, medium 400-700 m above sea level, and high ≥ 700 m above sea level. Most of the Kediri District area is in the lowland area of 73%, and 5% is highland, namely the Puncu Public Health Service, while 22% is mediumland, namely the Ngancar, Plosoklaten, Pranggang, Keling, Kepung, Bendo, Pare, and Sidorejo Public Health Services. The distribution of dengue hemorrhagic fever cases and dengue vector density in terms of topography can be seen in Figure 3.

Public health service Puncu is a highland, with a larval index $< 95\%$ with a high number of DHF cases at 40 cases. Keling Public Health Service is a medium altitude area, with a larval index $\geq 95\%$ with 19 cases of DHF. The highest number of DHF cases in Kediri District was found in Pare Public Health Service with 61 cases with a larval index $< 95\%$.

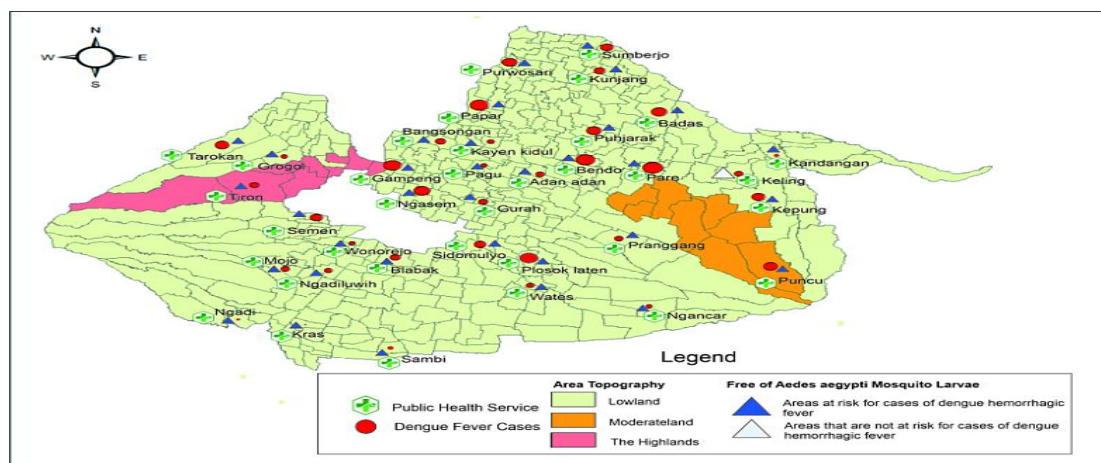


FIGURE 3 Areas at risk cases of DHF and topography of the area in Kediri Regency in 2022

Discussion

Kediri District is a dengue fever-endemic area, as all areas in Kediri district have the potential risk of dengue fever. The presence of *Aedes aegypti* mosquito larvae is still present in every region, and there is a very strong relationship between the presence of larvae and dengue fever cases in an area. The relationship between the presence of mosquito larvae and the incidence of dengue fever, not only in Kediri District but in other areas, but it is also evident, such as Boyolali, Sawit District, and Surabaya City [6,7].

Dengue fever is influenced by the density of *Aedes aegypti* mosquitoes, while the density of *Aedes aegypti* mosquitoes depends on environmental sanitation conditions. Poor environmental sanitation conditions provide opportunities for *Aedes aegypti* mosquito larvae to develop well. *Aedes aegypti* mosquitoes need clean water to lay eggs, but in urgent conditions, they can lay eggs in dirty water despite its high organic matter content, unless the dirty water contains ammonia, such as laundry wastewater [8]. The density of *Aedes aegypti* mosquito larvae can continue to grow, influenced by the place of egg laying in clean water, such as water reservoirs preferably dark in color and made of plastic, with room temperature of 29.54 °C and humidity 76.29% [3], Poor sanitation conditions in the home environment, due to

many water reservoirs in the home, such as animal drinking water containers, used bottles and buckets, uncovered barrels, bathtubs, flower vases, pots, or other used items[9-11].

The presence of larvae in Situbondo district is proven to be a vector carrier of dengue virus-causing dengue hemorrhagic fever (DHF). This is proven every year because dengue fever is always present in the region. One of the reasons why the *Aedes aegypti* mosquito larvae as carriers of dengue virus cannot be destroyed is the way of control carried out in the region using chemical control, which is carried out continuously and over a long period of time. The larvae of *Aedes aegypti* mosquitoes in the area have proven to be resistant to the organophosphate insecticide temephos [12]. Control of adult *Aedes aegypti* mosquitoes is also carried out chemically by fogging using malathion insecticides made from the active organophosphate group, so that both larvae and adult mosquitoes are continuously using insecticides in one class. This causes adult mosquitoes and larvae to become resistant to insecticides of that class [13,14].

Kediri District is topographically divided into three plains: lowland, sandy, and highland. The percentage of lowland areas out of 37 areas assisted by the public health service is 73%; the sea plains are 22%; and the highlands are only 5%. The spread of

dengue fever and the presence of *Aedes aegypti* mosquito larvae are spread from lowland to highland areas. The distribution of dengue fever cases based on the altitude of Kediri District also occurred in 2021, indicating that Kediri District is a dengue fever-endemic area. There is no difference in dengue fever cases between the lowlands and the highlands; the region has the same number of dengue fever patients as the highlands [14]. This result is different from the distribution of dengue fever cases in Manado City, Malala Subdistrict, where dengue fever sufferers in lowland areas are far more than in areas in the southern and highland categories [15]. Sleman Regency has a larva-free rate of almost all sub-districts with a value of <95%, meaning that there are still many *Aedes aegypti* mosquito larvae, and positively in the *Aedes aegypti* mosquito larvae there is dengue virus, proven by the presence of dengue fever sufferers in the area. Patients with dengue fever in Sleman Regency are spread out in low to highland areas, which distinguishes the highlands with fewer cases than the lowlands [16]. *Aedes aegypti* mosquitoes breed well in tropical and sub-tropical climates that have air temperatures ranging from 18 °C to 30 °C. *Aedes aegypti* mosquitoes lay eggs in areas that have warm temperatures; breeding only takes two days, but in areas with cold temperatures, the *Aedes aegypti* mosquito takes \pm a week. Egg hatching is also influenced by air temperature; the higher the air temperature, the lower the humidity. This condition will cause the hatching of eggs to decrease, so that relatively fewer larvae are formed. A decrease in pupation occurs when the room temperature is ≥ 30 °C [17,18]. Increasing temperatures in the Americas also decreased the capacity of the *Aedes aegypti* mosquito [19]. The growth of *Aedes albopictus* mosquitoes is well developed in the Alps of northern Swiss cities[20]. The results of resistance testing research in Kediri district,

East Java, Indonesia, showed that *Aedes aegypti* mosquitoes experienced resistance to malathion insecticide [13]. This is why dengue fever cases are still high every year. The increase in dengue vector density in tropical countries is very high and unavoidable, especially during the rainy season. Efforts are made for effective mosquito population control by larvasiding water reservoirs and implementing the government's appeal, namely draining and tightly closing water reservoirs and recycling used goods. The high incidence of dengue fever is because people do not implement the government's appeal to close, drain water reservoirs and process used material [21,22]. These activities can be carried out with the movement and cultivate mosquito breeding behavior [23]. It is different if the eradication of mosquito nests by repeated and too frequent use of malation insecticide will cause resistance. Therefore, it is recommended to replace mosquito eradication by fogging using insecticides from a different class of pyrethroids such as cypermethrin. The results of resistance testing of *Aedes aegypti* mosquitoes in Kediri District to cypermethrin insecticide have not experienced resistance to the insecticide [14].

Conclusion

The topography of Kediri District is mostly 73% lowland; 97% of areas in Kediri District have a larva-free rate of <95%, meaning that the area is at risk of dengue fever cases. Dengue fever cases are spread throughout Kediri District, both lowland and highland, with the highest cases in the Pare public health service area. The community is advised that in an effort to control vectors independently, they are required to carry out government programs, namely draining and tightly closing water reservoirs, recycling used goods, and conducting larvicides in water reservoirs.

Acknowledgments

The authors would like to thank the Kediri District Health Office and the Surabaya Health Polytechnic for providing support in this research process.

Author's Contribution

All authors have contributed equally to the completion of this research. All authors approve and validate the submitted manuscript.

Conflict of Interest

The authors declare that there is no conflict of interest in this manuscript.

Orcid:

Demes Nurmayanti*:

<https://orcid.org/0000-0003-1030-6313>

Ngadino Ngadino:

<https://orcid.org/0009-0003-6980-7056>

Marlik Marlik:

<https://orcid.org/0000-0002-5812-1521>

Slamet Wardoyo:

<https://orcid.org/0000-0003-3936-1893>

References

- [1] A. Nisaa, Korelasi antara faktor curah hujan dengan kejadian DBD tahun 2010-2014 Di kabupaten karanganyar, *Jurnal Ilmu Kesehatan Masyarakat*, **2018**, *14*, 25-33. [Crossref], [Google Scholar], [Publisher]
- [2] W. Runke, Y. Xiaoni, S. Yaya, W. Chengyong, L. Baokang, Study on air temperature estimation and its influencing factors in a complex mountainous area, *Plos one*, **2022**, *17*, 272946. [Crossref], [Google Scholar], [Publisher]
- [3] W.D. Kusuma, Gambaran bionomik nyamuk aedes aegypti Di kelurahan perumnas way kandis kota bandar lampung, *Ruwa Jurai: Jurnal Kesehatan Lingkungan*, **2021**, *12*, 95-101. [Crossref], [Google Scholar], [Publisher]
- [4] S. Wahyuni, Faktor determinan keberadaan larva nyamuk Aedes di daerah endemis demam berdarah dengue, *Jurnal Kesehatan Masyarakat Indonesia*, **2018**, *13*, 6-12. [Google Scholar], [Publisher]
- [5] Y. Khairina, Gambaran tingkat kepadatan jentik nyamuk Aedes aegypti di wilayah kerja unit pelaksana teknis Kemas Sukawati I Tahun 2019, *Jurnal Kesehatan Lingkungan (JKL)*, **2019**, *9*. [Crossref], [Google Scholar], [Publisher]
- [6] F.M. Nugroho, G.F. Alimmahiransyah, H.D. Bandaso, I.A. Prihadi, D.R.T. Subroto, Y. Maharani, S. Hayati, Hubungan keberadaan jentik nyamuk terhadap kejadian demam berdarah dengue (DBD) di kecamatan sawit, Kabupaten Boyolali, *Nexus Kedokteran Komunitas*, **2018**, *7*. [Google Scholar], [Publisher]
- [7] I. Ashari, T. Kurrohman, M. Aba, E. Surjati, E. Efendi, Keberadaan jentik nyamuk aedes aegypti dengan kejadian demam berdarah dengue (DBD), *Holistik J. Kesehat*, **2023**, *17*, 23-29. [Google Scholar], [Publisher]
- [8] I. Agustin, U. Tarwotjo, R. Rahadian, Perilaku bertelur dan siklus hidup Aedes aegypti pada berbagai media air, *Jurnal Akademika Biologi*, **2017**, *6*, 71-81. [Google Scholar], [Publisher]
- [9] D. Safitri, R. Sadeli, R. Hidana, T. Arrizqiyani, Gambaran keberadaan larva aedes aegypti di tempat penampungan air bengkel mobil/motor, *Journal of BTH Medical Laboratory Technology*, **2021**, *1*. [Google Scholar], [Publisher]
- [10] Y. Yulidar, M. Maksuk, P. Priyadi, Kondisi sanitasi lingkungan rumah penderita demam berdarah dengue (DBD) di wilayah kerja puskesmas, *Jurnal Sanitasi Lingkungan*, **2021**, *1*, 8-12. [Crossref], [Google Scholar], [Publisher]
- [11] E.I. Wisfer, M. Selomo, Hubungan jumlah penghuni, tempat penampungan air keluarga dengan keberadaan larva aedes aegypti di wilayah endemis DBD kota makassar, *Jurnal Kesehatan Lingkungan*, **2019**, 1-11. [Google Scholar], [Publisher]

- [12] D. Nurmayanti, H.N. Mukarromah, M. Marlik, R. La Ane, Geographic distribution of DHF cases and larvae free index in situbondo regency, 2019-2021, *Media Kesehat. Masy. Indones*, **2023**, *19*, 9–18. [[Crossref](#)], [[Google Scholar](#)], [[Publisher](#)]
- [13] I.S. Nur Haidah, Demes Nurmayanti, Marlik, "Detecting Conventional Resistance of Aedes Aegypti in Kediri District, East Java, Indonesia," *Teikyo Med. J*, **2022**, *45*, [[Google Scholar](#)], [[Publisher](#)]
- [14] B.A. Izza, N. Ngadino, D. Nurmayanti, M. Marlik, Y.A. Mirasa, Analisis spasial pengaruh house index dengan Kasus DBD di Kecamatan Bangilan Kabupaten Tuban, *BALABA J. LITBANG Pengendali. PENYAKIT BERSUMBER BINATANG BANJARNEGARA*, **2022**, 149–158. [[Crossref](#)], [[Google Scholar](#)], [[Publisher](#)]
- [15] V.C. Paomey, J.E. Nelwan, W.P.J. Kaunang, Sebaran penyakit demam berdarah dengue berdasarkan ketinggian dan kepadatan penduduk di Kecamatan Malalayang Kota Manado tahun 2019, *KESMAS: Jurnal Kesehatan Masyarakat Universitas Sam Ratulangi*, **2019**, *8*. [[Google Scholar](#)], [[Publisher](#)]
- [16] S. Novratilova, Angka kejadian penyakit demam berdarah dengue di kabupaten sleman tahun 2016 kajian menggunakan sistem informasi geografis, *Journal of Information Systems for Public Health*, **2018**, *5*, 28-37. [[Crossref](#)], [[Google Scholar](#)], [[Publisher](#)]
- [17] N.B. Embong, I.M. Pengaruh suhu terhadap angka penetasan telur Aedes aegypti. *E-Jurnal Medika*, **2016**, *5*, 1-8. [[Google Scholar](#)], [[Publisher](#)]
- [18] Y. Yahya, R. Ritawati, D.P. Rahmiati, Pengaruh suhu ruangan, kelembapan udara, pH dan suhu air umlah pupa aedes aegypti strain Lverpool (LVP), *Spirakel*, **2019**, *11*, 16-28. [[Crossref](#)], [[Google Scholar](#)], [[Publisher](#)]
- [19] M.G. Onyango, S.M. Bialosuknia, A.F. Payne, N. Mathias, L. Kuo, A. Vigneron, M. DeGennaro, A.T. Ciota, L.D. Kramer, Increased temperatures reduce the vectorial capacity of Aedes mosquitoes for Zika virus. *Emerging microbes & infections*, **2020**, *9*, 67-77. [[Crossref](#)], [[Google Scholar](#)], [[Publisher](#)]
- [20] D. Ravasi, F. Mangili, D. Huber, L. Azzimonti, L. Engeler, N. Vermes, G. Del Rio, V. Guidi, M. Tonolla, E. Flacio, Risk-based mapping tools for surveillance and control of the invasive mosquito Aedes albopictus in Switzerland, *International Journal of Environmental Research and Public Health*, **2022**, *19*, 3220. [[Crossref](#)], [[Google Scholar](#)], [[Publisher](#)]
- [21] N. Haryanti, N.A. Fajar, Y. Windusari, Analisis Pengendalian Lingkungan Sebagai Upaya Pencegahan Demam Berdarah Dengue Pada Balita di Kota Palembang, *Jurnal'Aisyiyah Med.*, **2020**, *5*. [[Crossref](#)], [[Google Scholar](#)], [[Publisher](#)]
- [22] I. Hikmawati, U. Sholikhah, H. Wahjono, and M. Community Vulnerability Map in Endemic Areas of Dengue Hemorrhagic Fever (DHF), Banyumas, Indonesia, *Iranian Journal of Public Health*, **2020** [[Crossref](#)], [[Google Scholar](#)], [[Publisher](#)]
- [23] M.A. Gifari, T. Rusmartini, R.D.I. Astuti, September. Hubungan tingkat pengetahuan dan perilaku gerakan 3M Plus dengan keberadaan jentik Aedes aegypti, In *Bandung Meeting on Global Medicine & Health (BaMGMH)*, **2107**, *1*, 84-90. [[Google Scholar](#)], [[Publisher](#)]

How to cite this article: Demes Nurmayanti*, Ngadino Ngadino, Marlik Marlik, Slamet Wardoyo, Spatial analysis of dengue fever by region and topography in kediri regency, east java, *Eurasian Chemical Communications*, 2024, 6(3), 327-333. **Link:** https://www.echemcom.com/article_184838.html